

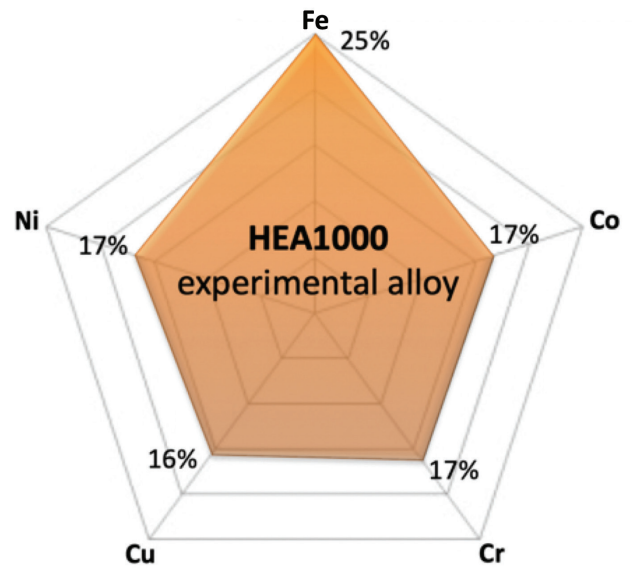
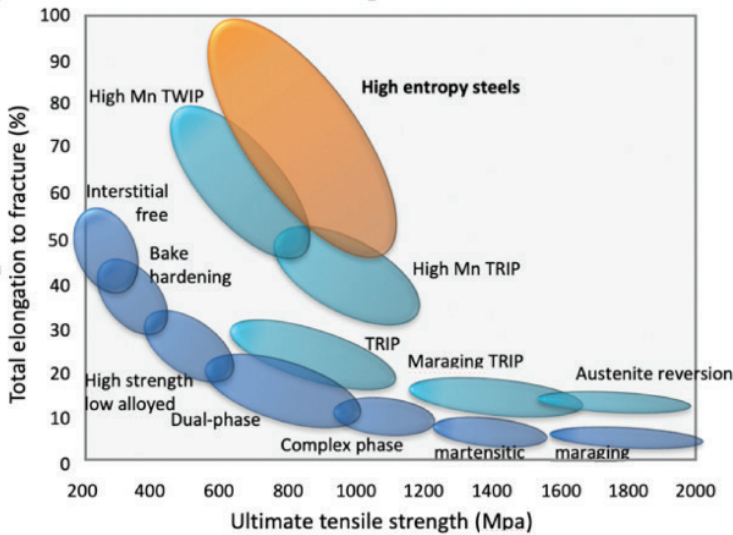
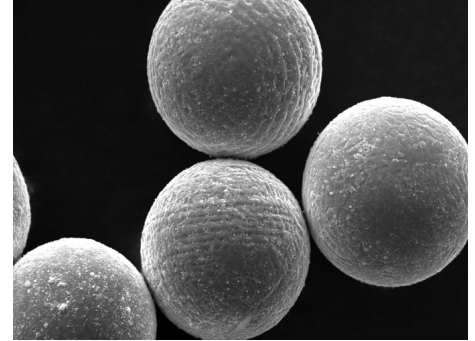
# HEA1000

Experimental Alloy



## 6K BRINGS HIGH ENTROPY ALLOYS (HEA) TO ADDITIVE FOR THE FIRST TIME

HEA1000 is an experimental HEA spherical powder for use in commercial consolidation processes such as additive manufacturing, HIP, or powder forging. HEAs open limitless possibilities for having a perfect blend of elements to tailor properties, such as high strength coupled with high elongation, higher strength-to-weight ratios, or stable properties over a wider range of temperatures. To date, the introduction into production volume applications has been virtually impossible due to alloy manufacturing limitations. HEA availability expands the options for higher performance parts in aerospace engines, airframes, industrial and medical applications among others.



*Cu and Cr have equivalent alloy % but significantly different melting temperatures.*

6K Additive's production team has extensive experience in powder production, alloys and metal reclamation. Our 80,000 sq. ft. facility is ISO9001 certified and AS9100 certification is in process.

**6K CORPORATE HEADQUARTERS**  
25 Commerce Way, N. Andover, MA 01845  
978 258 1645

**6K ADDITIVE, GLOBAL MANUFACTURING CENTER**  
541 Steubenville Pike, Burgettstown, PA 15021  
724 215 7049

[6KAdditive.com](http://6KAdditive.com)

012023